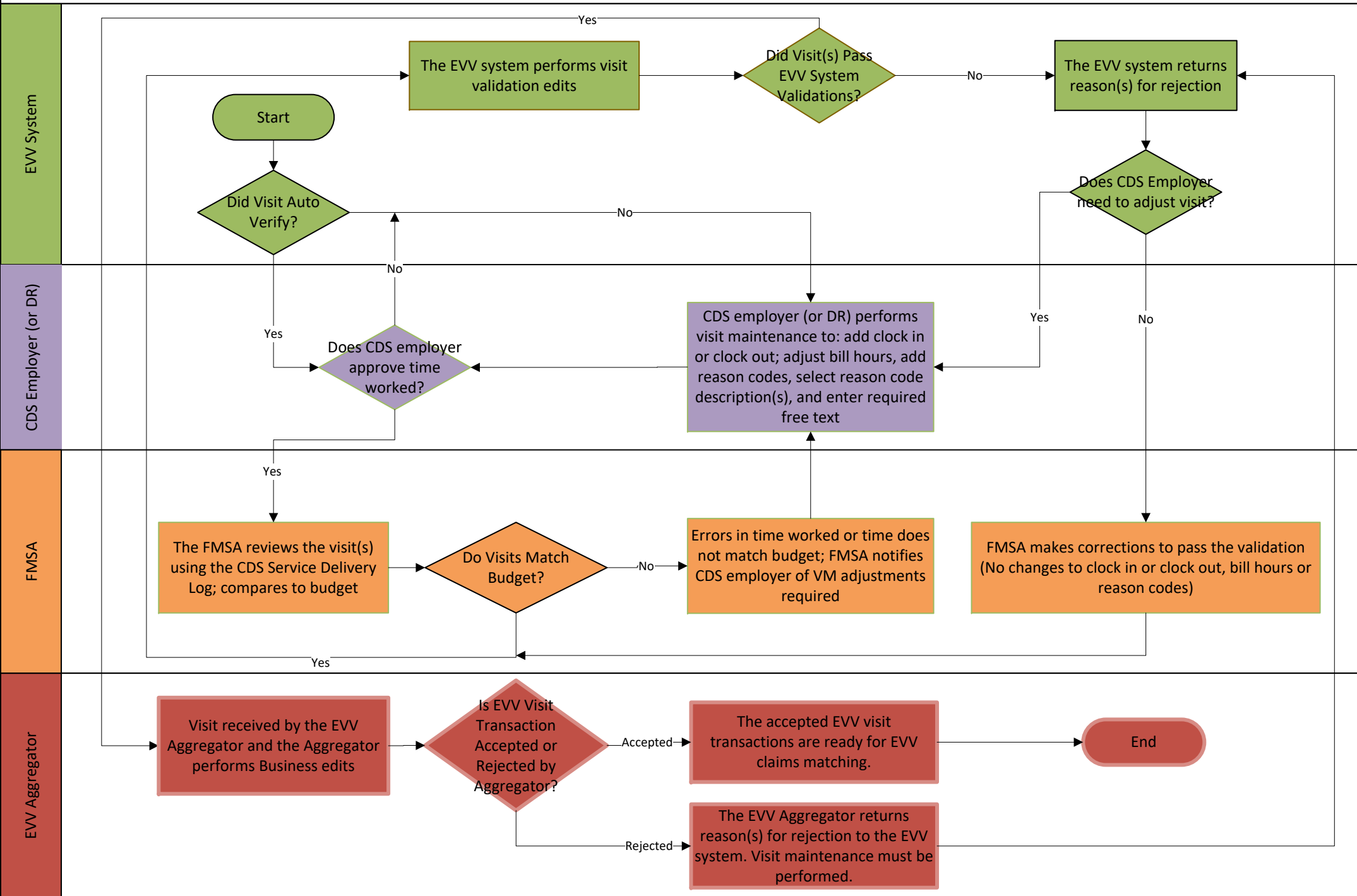


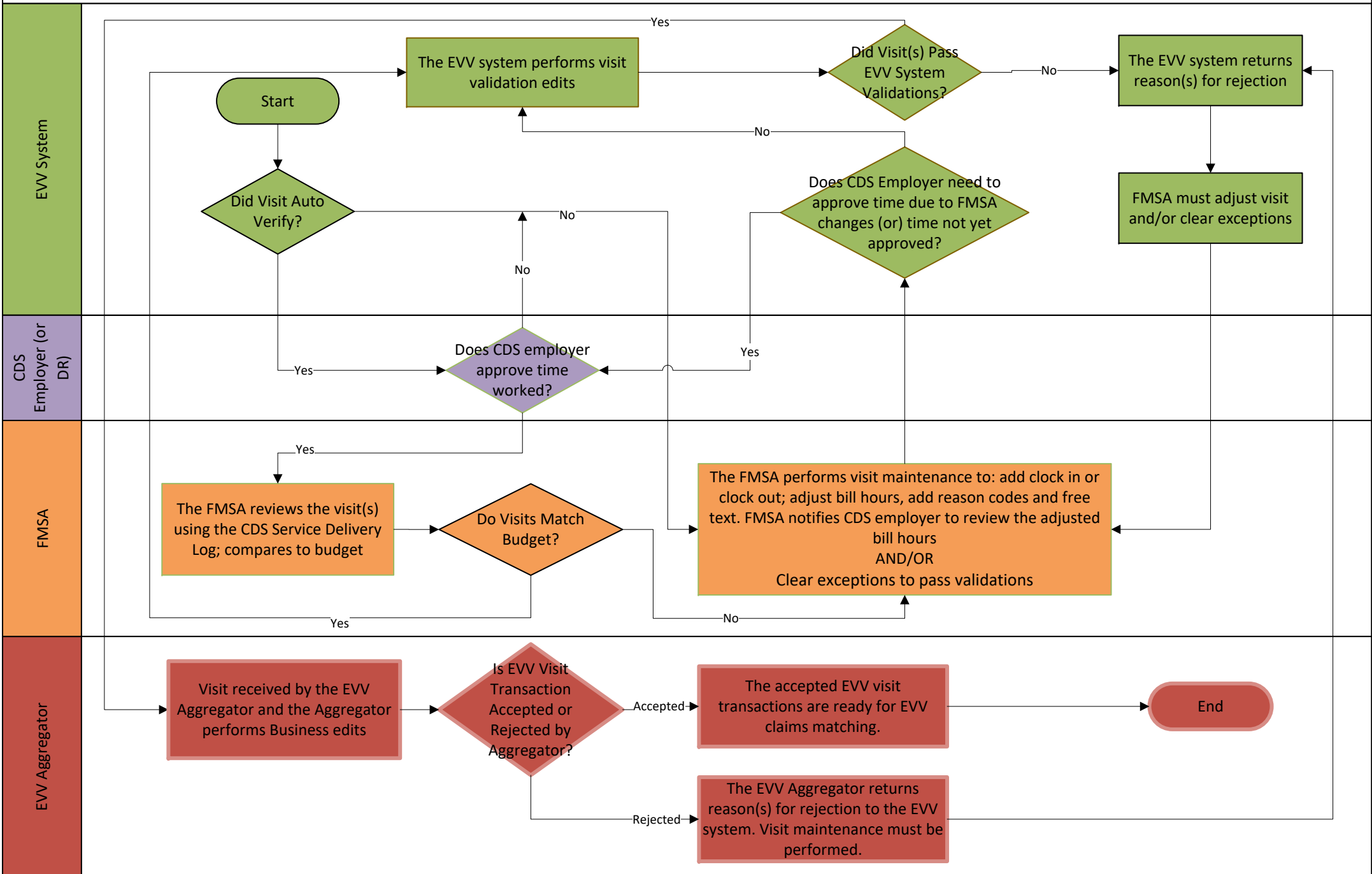
EVV Visit Maintenance Process Flow for FMSAs/CDS Employers

Option 1: CDS Employer will perform visit maintenance and approve the time worked by their CDS employees in the EVV system.



EVV Visit Maintenance Process Flow for FMSAs/CDS Employers

Option 2: CDS Employer elects to delegate the performance of visit maintenance to the FMSA. After the FMSA completes visit maintenance, the CDS Employer will enter the approval of the time the CDS employee worked in the EVV system.



EVV Visit Maintenance Process Flow for FMSAs/CDS Employers

Option 3: The CDS Employer elects to delegate the performance of EVV visit maintenance to the FMSA. The FMSA will confirm the employee's time worked in the EVV system based on approval documentation from the CDS employer.

